



MONTHLY MEMBERSHIP PROGRESS REPORT

District 2 T3

Results as of: 02/28/2019

GMT: GREGORY GILLIAM

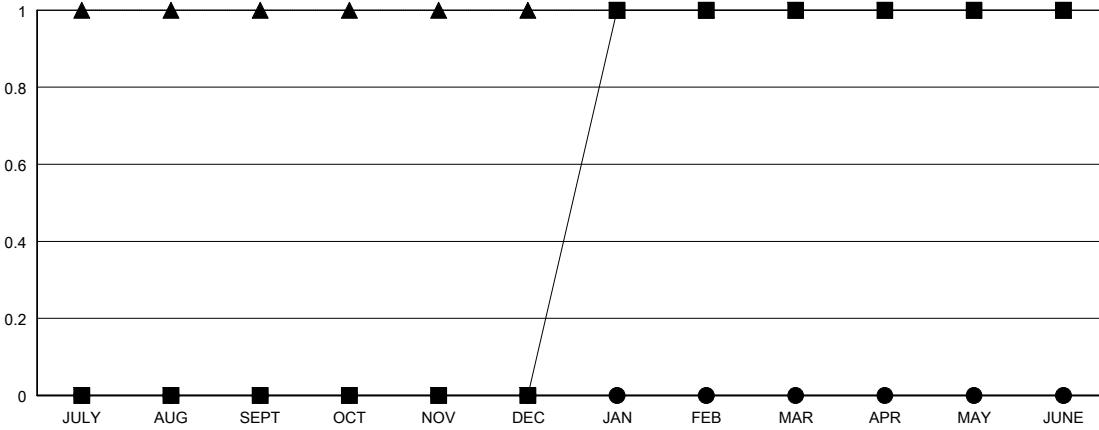
LOCATION TEXAS

GMT CA

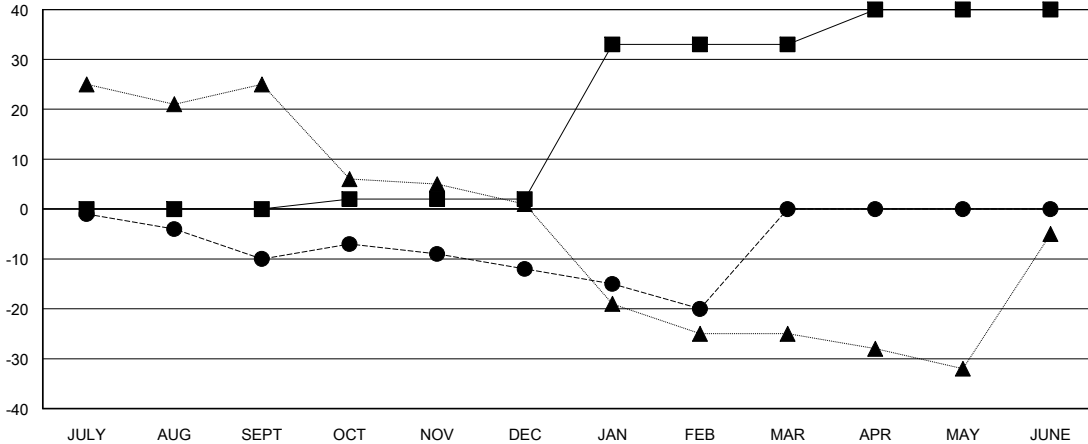
Clubs			
RESULTS FOR 2018-2019			
QUARTER	NEW CLUB GOAL	NEW CLUBS	DROPPED CLUBS
JULY/AUG/SEPT	0	0	0
OCT/NOV/DEC	0	0	0
JAN/FEB/MAR	1	0	0
APR/MAY/JUNE	0	0	0

Members			
RESULTS FOR 2018-2019			
QUARTER	MEMBER GROWTH NET GOAL	MEMBER GROWTH ACTUAL	DROPPED MEMBERS ACTUAL (including transfers)
JULY/AUG/SEPT	0	16	25
OCT/NOV/DEC	2	26	25
JAN/FEB/MAR	31	17	25
APR/MAY/JUNE	7	0	0

GOALS AND ACTUAL NEW CLUBS CUMULATIVE



GOALS AND ACTUAL MEMBERS CUMULATIVE



DROPPED CLUBS: 0

19 CLUBS OF 33 ADDED 1 OR MORE NEW MEMBERS

GENDER DISTRIBUTION	
MALE	419 (57.71%)
FEMALE	307 (42.29%)
Women Percentage Fiscal Year Goal: 30%	

DROPPED MEMBERS	
DECEASED	9
CLUB CANCELLED	0
OTHER	66
TOTAL	75

[CLICK HERE FOR CUMULATIVE MEMBERSHIP DATA](#)

TOTAL FAMILY UNIT MEMBERS	107
FAMILY MEMBERS PAYING HALF DUES	55